



THE
PRINCESS
THEATRE



**THE GALLERY
MEETING EVENTS**

YOUR NEXT EVENT AWAITS

Welcome to the jewel in the crown of The Princess Theatre - The Gallery. Featuring high ceilings and a custom made boardroom table, this will be your new favourite space to hold your weekly business meeting.

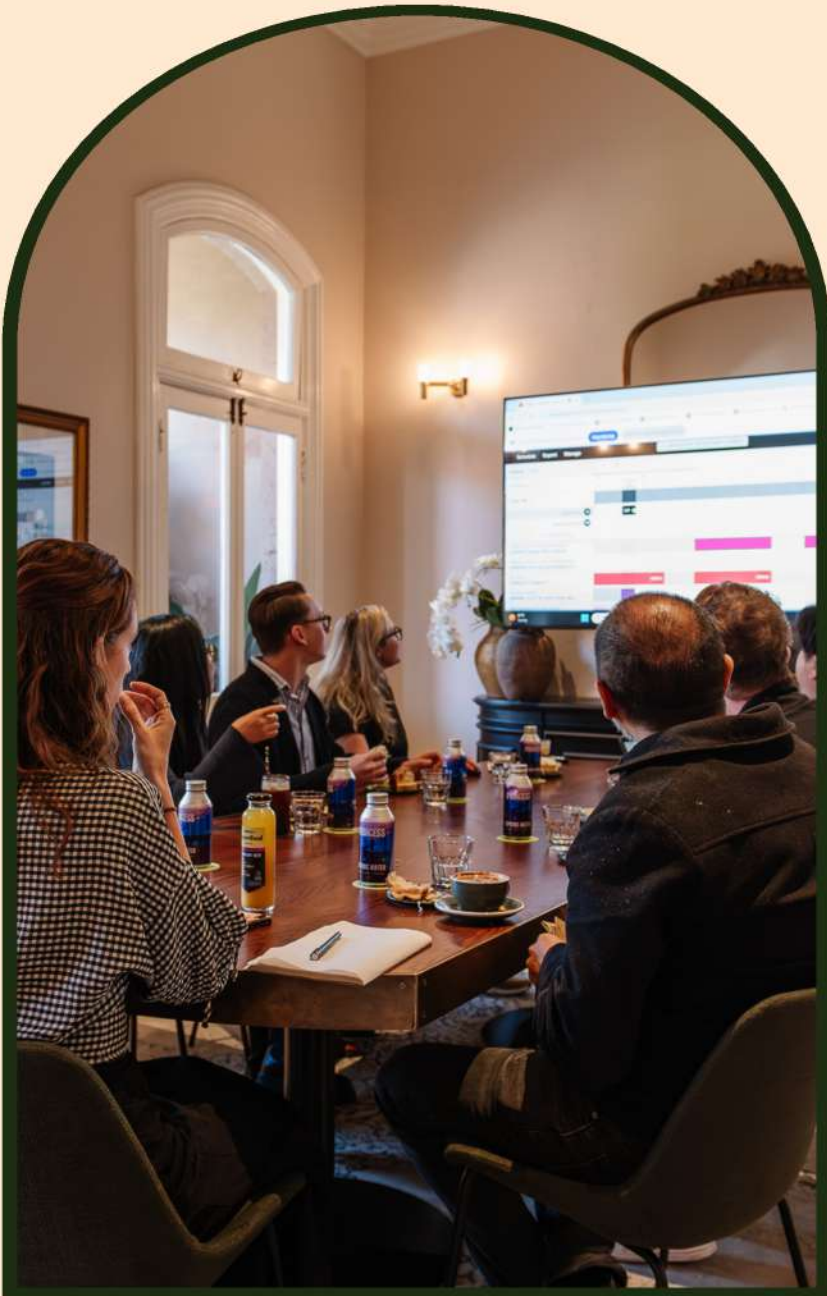
With every booking, you receive exclusive use of our space along with all of its amenities including:

- Private bar
- Private balcony
- Bathrooms adjoining the space
- Custom designed furniture including boardroom table, lounge settings, dry bars and bar stools
- Air conditioning
- Free Wi-Fi
- 75" TV with HDMI connection
- Dedicated Event Coordinator

The Gallery is available for private use 7am - 7pm Monday - Saturday. Our venue hire fees for Gallery bookings are as follows:

FULL DAY	\$1,100
HALF DAY (5HR ACCESS)	\$880

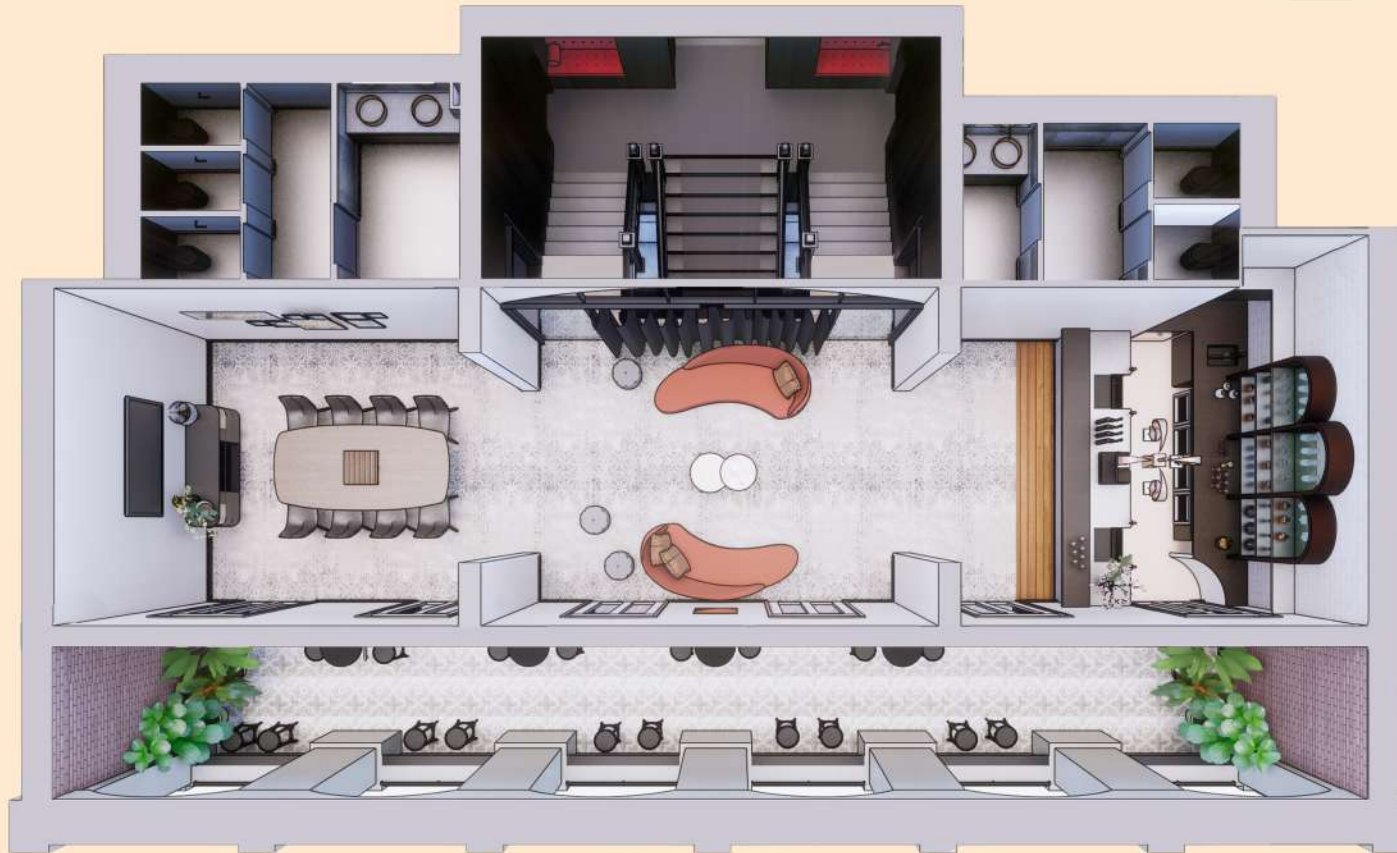
Please note: The Gallery is only accessible via a grand heritage staircase. For wheelchair accessible meeting options, please speak to our friendly events team.



THE GALLERY SPACE

“The venue was perfect, it led to really creative discussions. The tour was really fun. The food was excellent, the coffee was great, and the customer service, all day by everyone, was exceptional!”

- Liz Tyson-Doneley, Griffith University



COCKTAIL STYLE
SIT DOWN DINNER
MEETING STYLE

100 pax
32 pax
8-20 pax



PLEASE NOTE:
SET ALTERATIONS
ARE SUBJECT TO A
SMALL FEE.

MEETING CATERING OPTIONS

HALF DAY DELEGATE - \$43pp

- Sandwich lunch
- Morning or afternoon tea platter
- Coffee and tea station
- Cold water

Option to add on:

- Non-alcoholic beverage package \$12pp
- Barista made coffee from \$5.50 per item

FULL DAY DELEGATE - \$55pp

- Sandwich lunch
- Morning and afternoon tea platters
- Coffee and tea station
- Cold water

Option to add on:

- Non-alcoholic beverage package \$17pp
- Barista made coffee from \$5.50 per item





FOOD AND BEVERAGE OPTIONS

SANDWICH SELECTIONS

- Ramen Egg Salad: Takuan (pickled daikon), butter, lettuce
- Ham: Gruyere, butter, pickled green tomato, mustard (GFO)
- Poached chicken: Brown butter mayonnaise, dill pickle, iceberg lettuce, crispy fried onion (GFO)
- Salad: Green goddess dressing, carrot, alfalfa sprouts, tomato, iceberg lettuce, bread and butter pickles (V) (GFO)
- Ruben: Russian dressing, sauerkraut, cornichon, pastrami (GFO)
- Roast Vegetable: Zucchini, eggplant, capsicum, goats curd, basil pesto (VO) (GFO)

TEA BREAK PLATTERS

- Mixture of seasonal fresh fruit
- Selection of mixed pastries provided by Sprout Bakery

TEA AND COFFEE STATION

- Selection of fine teas including: English Breakfast, Earl Grey and Peppermint
- Freshly brewed Allpress coffee

BARISTA MADE COFFEE

Enjoy the optional addition of a barista made coffee, straight from Fables Bar & Café, located downstairs. Prices start from \$5.50 per coffee.

GFO GLUTEN FREE
V VEGETARIAN
VO VEGAN OPTION AVAILIABLE

Please note: all menu items are seasonal and are subject to change.

BEVERAGE OPTIONS

NON-ALCOHOLIC BEVERAGE PACKAGE

- StrangeLove Soda
 - Double Ginger
 - Very Mandarin
 - Holy Grapefruit
- Simple Juice 325mL
 - Apple
 - Orange
 - Passion hit
- Allpress Iced Coffee Cans

PLEASE NOTE: All menu items are seasonal and are subject to change.

EXPERIENCE OPTIONS

Wanting to include an extra experience that your team are sure to remember? We can cater to a range of different activities for you and your team whilst you are with us.

One of our most popular experiences is a history tour of The Princess Theatre, with prices starting from \$300 per tour.

Talk to our Event Coordinator about the different options we can offer for your next meeting.



AFTER MEETING ADDITIONS

Ready to unwind after a long day? Plug in your favorite playlist and transform The Gallery into the ultimate post-meeting bar. Socialise and debrief over drinks and delicious fresh produce while enjoying the sunset from the balcony.

GRAZING PLATTER* - \$145 per platter

- Mount Zero olives
- Adelaide Hills double cream brie
- Maffra cloth-ashed cheddar
- Girolamo free-range leg ham
- Gluten free falwasser
- Morcon grand salami
- Guindillas, cornichons and other accompaniments

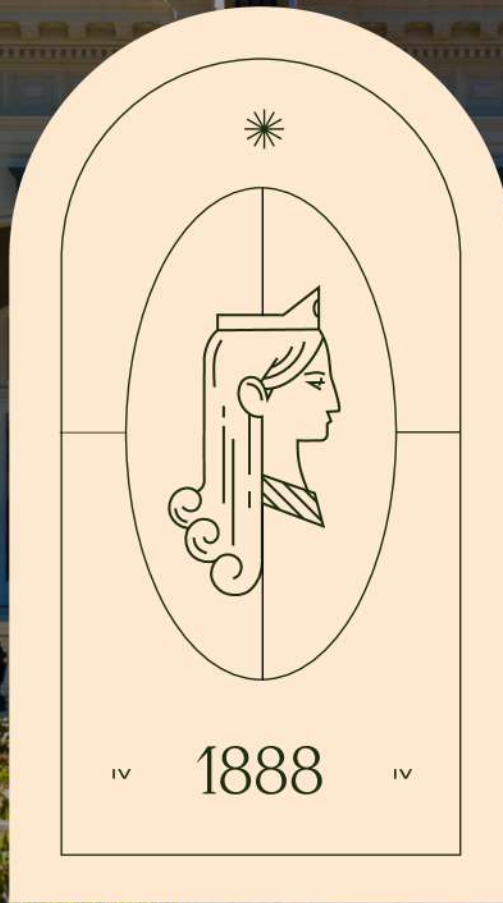
*Vegetarian and Vegan options available upon request, platter serves 10 guests.

KNOCK OFF DRINKS - from \$12pp

- Secret Garden Sparkling Brut
- City Winery Rosé
- City Winery Blanc
- City Winery Shiraz
- Great Northern Super Crisp
- Somersby Apple Cider
- Heaps Normal Non-Alcoholic Beer
- Soft Drink

Looking for something more? Talk to our team about upgrading to one of our popular drinks packages to keep networking well into the evening.





✕ **YOUR NEXT GALLERY EVENT AWAITS** ✕

8 Annerley Road, Woolloongabba, QLD 4102

Phone: (07) 3852 1711

harry@theprincesstheatre.com.au